

Solutions to Homelessness in Gippsland – Victorian Election, 2022.

The Gippsland Homelessness Network is one of 9 Homelessness Networks in Victoria with a membership of 11 funded Specialist Homelessness Services (SHS) across Gippsland from Leongatha to Mallacoota. The Network's aim is to end homelessness and work together to deliver a co-ordinated homelessness response to the community of Gippsland.

ACTIONS

1. Review the Unit Price for the delivery of Specialist Homelessness Services

The Unit Price for the delivery of Specialist Homelessness Services has not been reviewed since 2000/2001. This review should be undertaken along with the changes to the new Activity Structure and the Reform of the service delivery model.



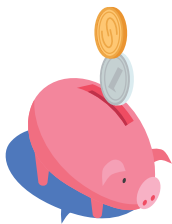
2. Workforce expansion (Intake Assessment and Planning (IAP) & Case Management Support)

Gippsland needs an increase of at least 6 fulltime positions for IAP and include Assertive Outreach as a preventative measure, and a further 7 fulltime Case Management Support positions.



3. Increased funding of the Housing Establishment Fund (HEF)

Given the inadequate supply of social housing, the limited supply and soaring demand and cost of private rental, the need for emergency accommodation has increased but the funding has not.



4. Victoria needs a minimum build of 6,000 social housing dwellings per year for at least 10 years to bring it up to the national average of social housing

3,100 dwellings are needed in the Federal Electorate of Gippsland and 3,000 in the Federal Electorate of Monash. Medium density (1-2 bedroom) housing stock is needed to meet the demand for singles and couples.



5. Housing First

The Gippsland Homelessness Network endorses Housing First, it provides permanent housing to end homelessness and wrap around support to improve quality of life and sustain tenancies.



6. A Functional Zero Pilot for Gippsland

Gippsland has been using a by name approach to source accommodation for 26 households (including 55 children) living in motels for extended periods of time due to COVID-19. Now only one household is without an exit into suitable accommodation.

7. A minimum of 60 Youth Foyer- like accommodation beds for Gippsland

Gippsland has only 16 refuge beds for young people with stays of 6 weeks. Youth Foyer-like accommodation supports young people experiencing homelessness to participate in education, training and employment.

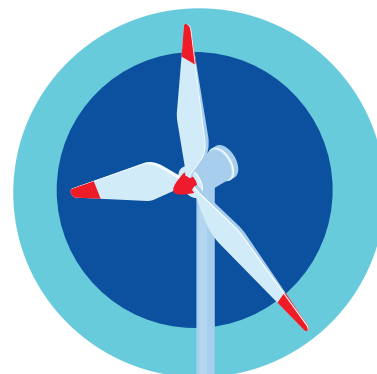


8. Aboriginal Housing

The Gippsland Homelessness Network supports self-determination and the implementation of the Aboriginal Housing & Homelessness Framework; *Mana-na worn-tyeen maar-takoort* Every Aboriginal Person Has a Home.

9. Large Development contracts to include the building of accommodation for their workers rather than taking up local rentals

Developments such as the recent Federal announcement of a wind farm in Bass Strait build worker accommodation of a quality fit for social housing post the completion of the development.

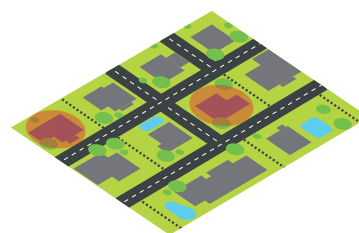


10. Melbourne Commonwealth Games 2026 - events in Gippsland

Commonwealth games events to be secured for Gippsland. Community Housing Industry Association (CHIA) is recommending that 300 dwellings be built in each of the 4 regional sites.

11. Legislate Inclusionary Zoning

Legislate Inclusionary Zoning for scaled up percentage (starting at 5-10%) of social housing in new housing developments.



12. Unoccupied dwellings - Victoria to consider similar legislation to NSW

ABS Census 2021 - Gippsland has 29, 081 unoccupied dwellings. An average of 19.76 % of total dwellings across the region. NSW has legislated that Short Term Rental properties can only be let for a maximum of 180 days per year.

13. The Gippsland Homelessness Network has contributed to and supports The Council to Homeless Persons (Victorian Homelessness Peak) Election Platform.

14. When will the Victorian Governments 10 year Social and Affordable Housing Strategy be released?